



112 FINCHLEY ROAD
LONDON NW3 5HT
INFO@RHWESTATES.CO.UK
020 7431 7121

WWW.RHWESTATES.CO.UK



GOLDHURST MANSIONS
13 GOLDHURST TERRACE
SWISS COTTAGE
NW6 3HY

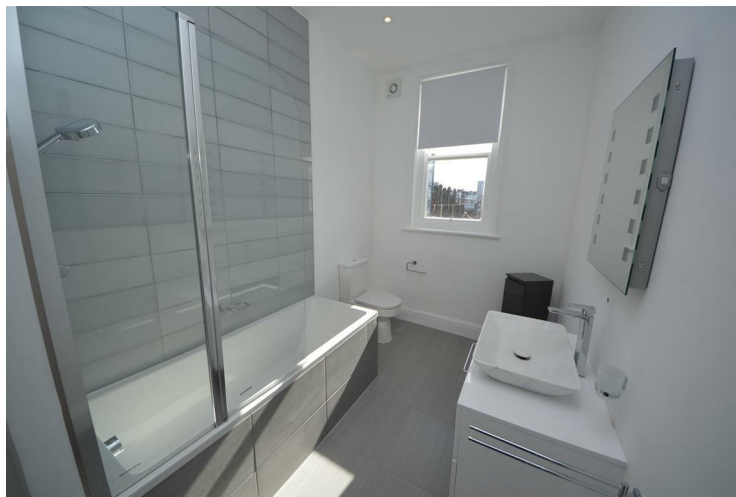
PCM £4,300 PCM
SUBJECT TO CONTRACT

We are pleased to offer this magnificent mansion apartment, featuring four spacious bedrooms, which was recently refurbished and is now offered in immaculate condition. Ideal for either a family or sharers as an Additional HMO licence is in place, Available immediately furnished or unfurnished.

Set on the 4th floor within a beautiful Victorian Mansion block with a passenger lift and Communal Garden, entered via a large hallway and all rooms are spacious with high ceilings, 4 bedrooms, a luxury bathroom and an en suite shower room, and a guest WC. Very Large reception room and luxurious modern kitchen.

Located within a 1-minute walk to Finchley Road tube station and shopping facilities. A very large, rarely available four-bedroom apartment in the heart of the much sought-after South Hampstead.

Must be seen



FEATURES

VIDEO TOUR:

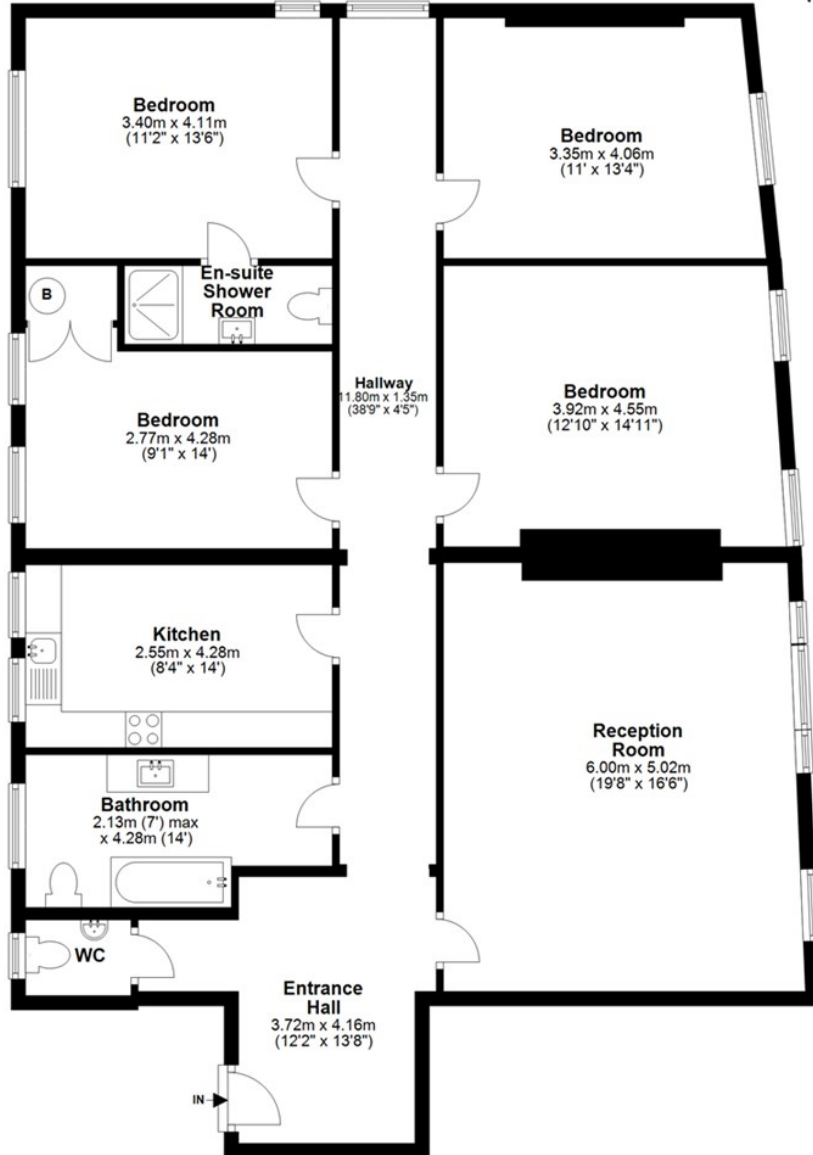
SERVICE CHARGE: £

TENURE:

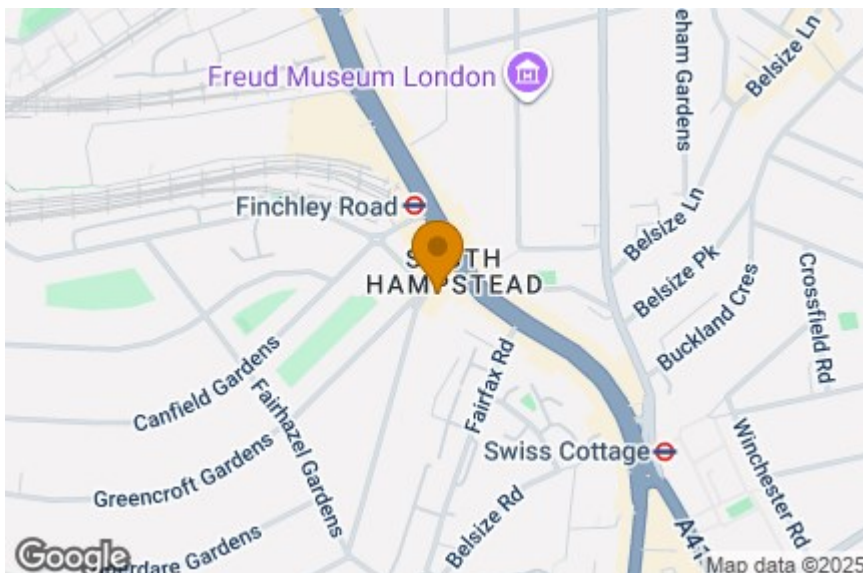
COUNCIL TAX: G

Fourth Floor

Approx. 147.2 sq. metres (1584.7 sq. feet)



Total area: approx. 147.2 sq. metres (1584.7 sq. feet)



Energy Efficiency Rating		
	Current	Potential
Very energy efficient - lower running costs		
(92 plus) A		
(81-91) B		82
(69-80) C		
(55-68) D	66	
(39-54) E		
(21-38) F		
(1-20) G		
Not energy efficient - higher running costs		
England & Wales		
EU Directive 2002/91/EC		



IMPORTANT NOTICE

Whilst every attempt has been made to ensure the accuracy of these details and floor plans contained here, measurements of doors, windows and rooms are approximate and no responsibility is taken for any error, omission or mis-statement. These plans and details are for representation only as defined by RICS code of measuring practice and should be used as such by any prospective purchaser.

Not to scale. Copyright: RHW Estates